

ModernMT Plugin Guide for MemoQ

Quick introduction on how to setup ModernMT plugin in MemoQ

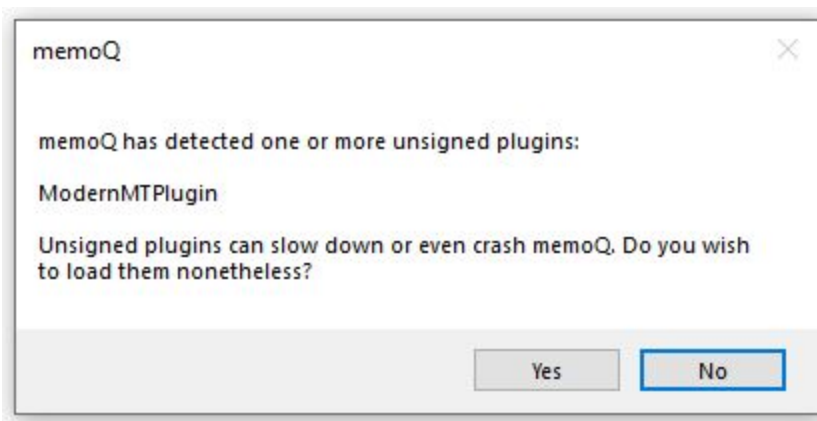
Plugin installation

Installing the plugin is quite simple. Just double click on the plugin installer and follow the steps in order to add the plugin to MemoQ. Please keep in mind that if MemoQ was not installed in the default directory, you'll have to update the installation path accordingly.

Finally, in order for the changes to take effect, restart MemoQ.

Memoq launch

The following message may appear on memoq launch. This is due to the fact that right now we're in beta version.



There's nothing to worry about, just answer yes to load the plugin.

Enable the ModernMT plugin

You can add ModernMT to an existing project by clicking on the “Settings” button [1] on the left of the project home window, as shown in the picture below.

Then, click on the MT Settings icon [2], create a new entry [3], and edit it [4].

The screenshot shows the memoQ interface with the 'Settings' window open. The 'Settings' window is titled 'Settings' and contains a section for 'MT settings'. A red circle labeled '1' highlights the 'Settings' icon in the left sidebar. A red circle labeled '2' highlights the 'MT Settings' icon in the 'MT settings' section. A red circle labeled '3' highlights the 'Create/use new' button at the bottom of the 'ModernMT' section. A red circle labeled '4' highlights the 'Edit' button at the bottom of the 'ModernMT' section.

Project home

Translations

LiveDocs

Translation memories

Term bases

Muses

Settings 1

Review your project's meta-information, and select additional resources that you wish to use in your project

Settings

MT settings: Select the MT settings you wish to use in your project 2

Name/description

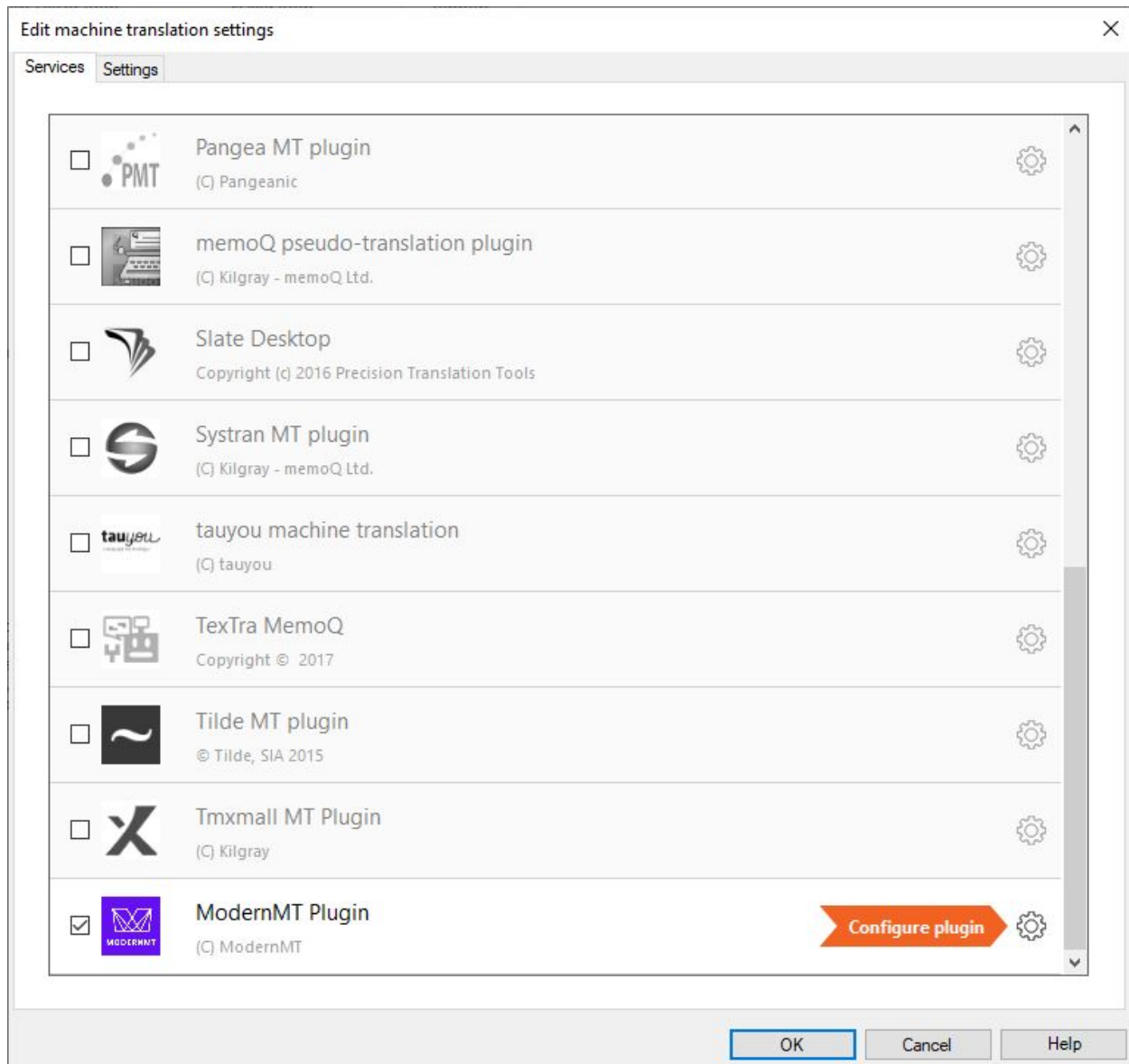
	Name	Path / URL
<input checked="" type="checkbox"/>	ModernMT	C:\ProgramData\MemoQ\Resources\Local\MT Settings\...

ModernMT :

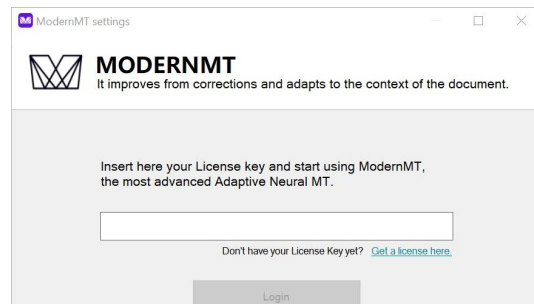
3 Create/use new Clone/use new Delete 4 Edit Properties Import new Export

Project (ita): 0%

The following window will appear. Click on the configure icon to enable ModernMT plugin:



The very first time you add ModernMT to a project, you will be asked to activate your plugin with the "License" you received after the registration. Insert the 32-character long license and click on "Login" to activate the plugin.

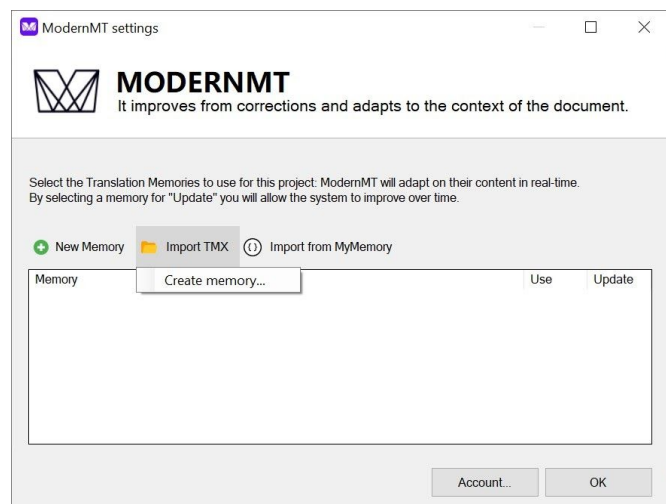


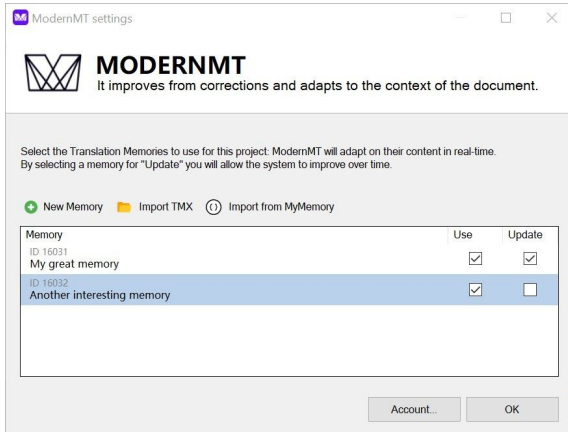
Configuring ModernMT plugin

You can customize ModernMT machine translation by providing Translation Memories in TMX format: their content will be used by ModernMT in real-time to learn the right terminology and style to use for every single project. Moreover, you can organize your memories as you prefer: you can have all the multilingual translation memories that you want, and for every project, you can choose your preferred combination.

ModernMT will **react in real-time** to your decisions and will provide a machine translation that is adapted following your settings. In other words: there are no pre-built customized models or long-running training processes.

You can create new empty memories, by clicking the “New Memory” button, or just import your existing ones from “.tmx” files with the “Import TMX” button.



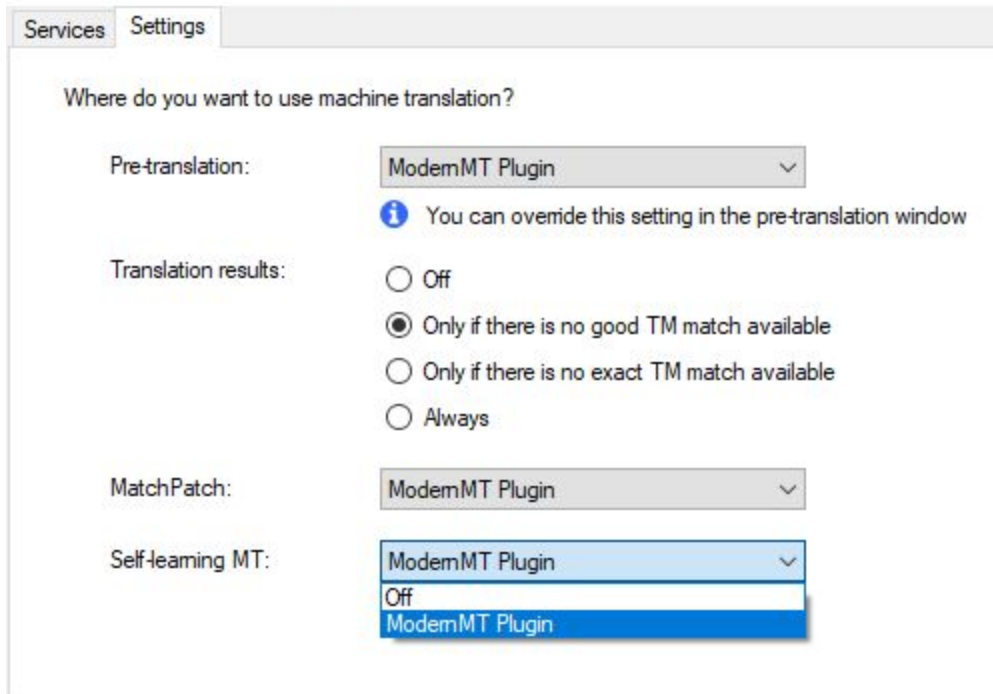


You can select the memories you want to “Use” for this specific project, and also choose which memory you should save your translations to with the “Update” column.

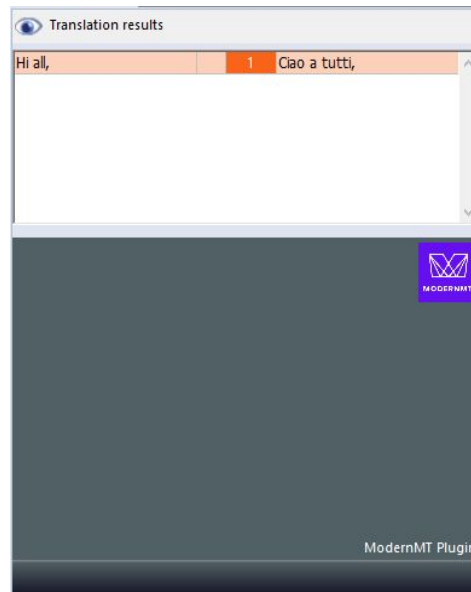
ModernMT is able to learn immediately from your corrections, improving the translation output in real-time.

Finally make sure to have at least one MemoQ translation memory in use in the project, and to select ModernMT as self-learning MT (see the next picture). That’s required to perform updates on your memories in ModernMT.

Edit machine translation settings



You will now receive personalized machine translation from ModernMT in the suggestions box of the editor window.



MemoQ Server

The plugin should work out of the box on MemoQ Server.

However, if the plugin does not appear in the list after the installation, the following file must be created on the server in order to allow the plugin loading.

If it already exists, just edit it adding an entry for ModernMT.

C:\ProgramData\MemoQ Server\UserApprovedUnsignedMTplugins.xml

```
<?xml version="1.0" encoding="utf-8"?>
<ApprovedUnsignedMTPluginsCatalog xmlns:xsd="http://www.w3.org/2001/XMLSchema"
xmlns:xsi="http://www.w3.org/2001/XMLSchema-instance">
  <ApprovedUnsignedMTPlugins>
    <Plugin>
      <Name>ModernMTPlugin</Name>
    </Plugin>
  </ApprovedUnsignedMTPlugins>
</ApprovedUnsignedMTPluginsCatalog>
```